

LEADER OF TECHNOLOGY AND QUALITY

科技&品质领先者

Kaytec
科马克

 www.kotaimachinery.com

Forklift

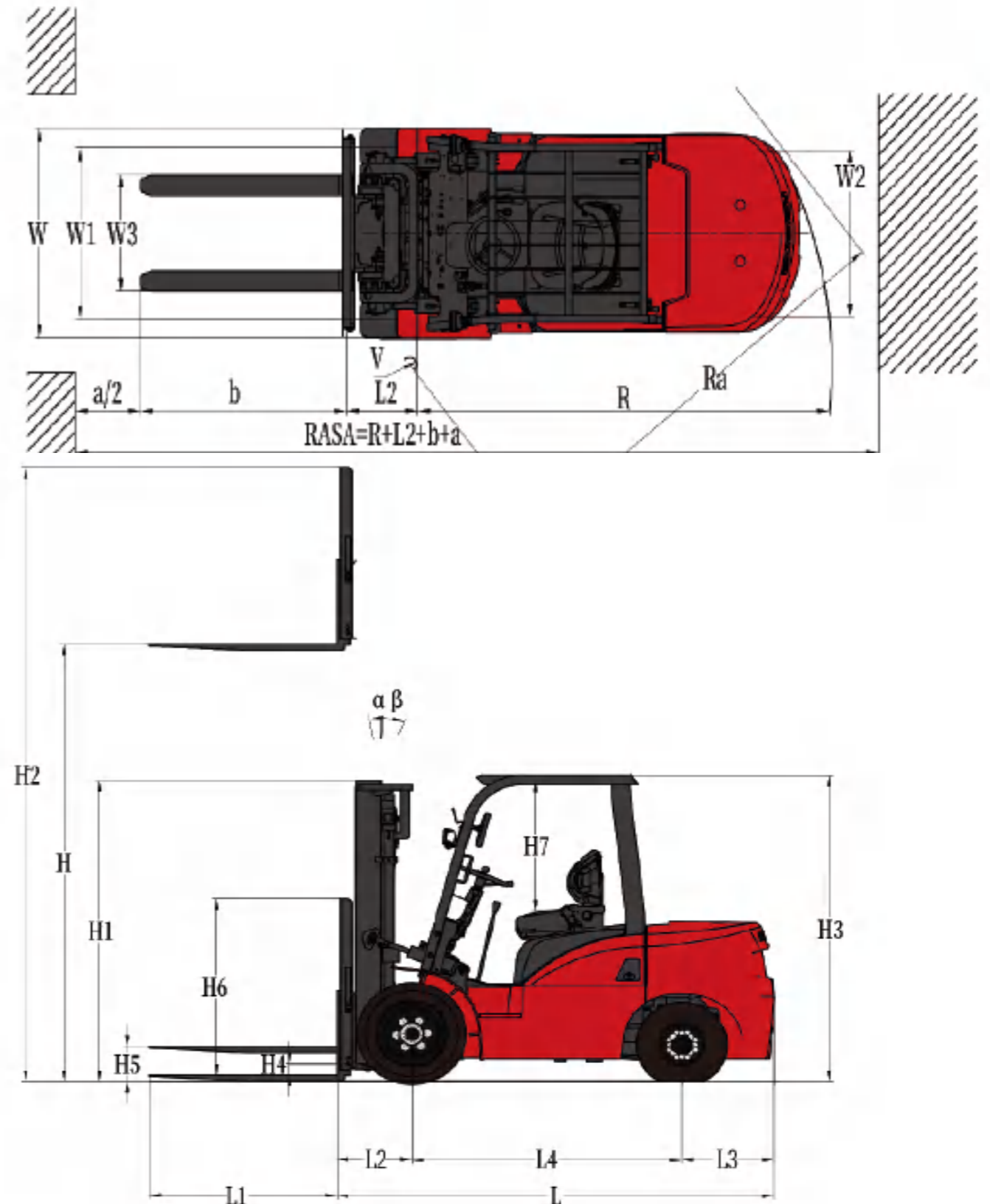
KF80

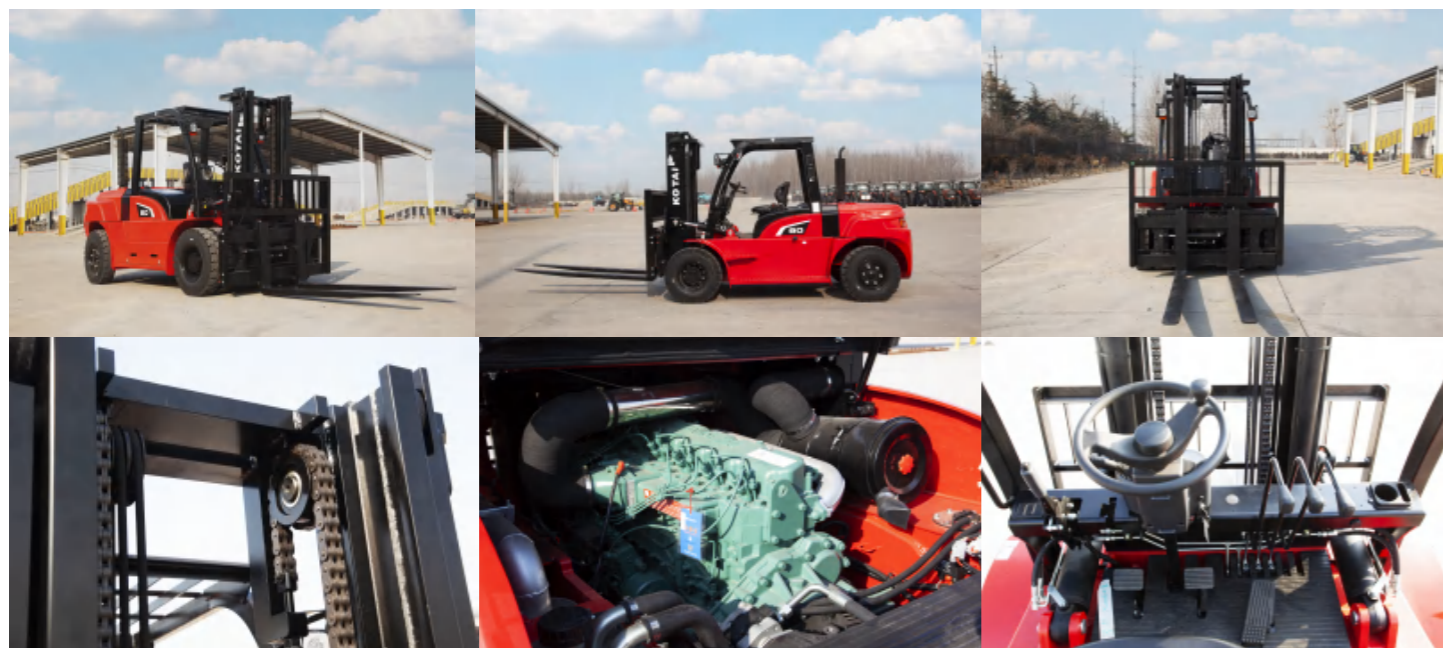


TECHNICAL PARAMETER 技术参数

Power Type	动力形式	Diesel
Rated Load Capacity	额定起重量	8000kg
Load Center Distance	载荷中心距	600mm
Max Lifting Height	最大起升高度	3000mm
Mast Tilt Angle (Front/Rear)	门架倾角(前/后)	6°/12°
Operating Weight	自重	9900kg
Length	长度	3830mm
Width	宽度	2000mm
Height	高度	2560mm
Min. Ground Clearance	最小离地间隙	260mm
Wheelbase	轴距	2500mm
Track Width	轮距	1470mm
Fork (L × W × T)	货叉(长×宽×厚)	1220×150×65mm
Engine Model	发动机型号	Xichai 4DF3
Emission Standard	排放标准	National Standard III
Battery (voltage/capacity)	蓄电池(电压/容量)	24/100
Free lift height	自由起升高度	195mm
Maximum lifting speed (full /empty)	最大起升速度(满载/空载)	442/48 (mm/s)
Maximum descent speed(full /empty)	最大下降速度(满载/空载)	400/360 (mm/s)
Maximum driving speed(full /empty)	最大行驶速度(满载/空载)	22.5/25 (km/h)
Minimum turning radius	最小转弯半径	3700mm
Climbing slope (full load/empty load)	爬坡度(满载/空载)	20/25%
Maximum hook traction force	最大挂钩牵引力	70kN
Gate frame height	门架高度	2560mm
Overhead guard height	护顶架高度	2510mm
Height of shelving	挡货架高度	1500mm
Full height at maximum lifting	最大起升时的全高	4490mm
Tire	轮胎	8.25-20-14PR
Rated power	额定功率	85 (kw/rpm)
Number of cylinders	缸数	4

The KF80 internal combustion engine balanced weight forklift is suitable for outdoor working conditions, such as construction sites, mines, ports and other places with relatively harsh working environments and high requirements for forklift power and carrying capacity. It can be used for loading and unloading heavy objects such as building materials and ores, as well as handling and stacking goods on uneven ground.





Product features:

1. Choose Xichai engine, with strong power, guaranteed quality, cleaner emissions, and more fuel-efficient. Optional engine from other brands.
2. Integrated design of electrical circuits, with fuses and relays concentrated in the electrical box and spare fuses available; Located inside the hood, it has waterproof and dustproof effects, reliable insertion, and easy maintenance.
3. Optimize the layout inside the cabin, with batteries, oil pump motors, electrical components, and hydraulic oil tanks all located inside. The hood has a large opening angle, making daily maintenance more convenient.
4. The two-stage air purification design with iron air filter and independent intake channel at a high position ensures more complete diesel combustion and extends engine life.
5. The wiring harness layout is neat and beautiful, and easy to maintain; The electrical components are fixed on both sides of the vehicle body, balanced and firm; The wire harness becomes shorter, with no unnecessary bends, resulting in higher conductivity efficiency.
6. Cast integrated steering axle, with main shaft bearings designed with tapered bearings for stronger impact resistance and extended axle life.
7. Appearance design, sheet metal mold one-time molding, smooth and beautiful lines, better anti-collision and anti-deformation performance. The surface acid pickling, phosphating, rust removal, and baking paint process has good anti-corrosion, rust proof, and antioxidant effects, and higher residual value in the later stage.
8. According to ergonomic design, the tilt angle can be adjusted to a small diameter steering wheel (diameter 300), which has a good feel and reduces operator fatigue intensity.
9. The bridge shell adopts cast steel technology, which makes the structure more sturdy and has stronger pressure bearing capacity.
10. Based on advanced ergonomics design, the integrated control valve style operating handle and centralized layout of electrical switches provide fast and convenient operation.
11. Adopting a stamped engine hood makes the entire vehicle more sturdy and reliable.
12. The side rollers are located above the main rollers. When the shelf is raised to a higher position, the amplitude of left and right shaking is greatly reduced, which improves the stability of high-level operations and reduces the bearing failure rate.
13. Adopting digital stepper instrument panel and CAN bus communication technology, the display is more intuitive, with high human-computer interaction, real-time monitoring of the whole machine status, fault alarm, quick processing, comfortable driving and riding, and reliable use.
14. Adopting a fully hydraulic load sensing system, priority steering, faster steering response speed, and lighter handling; The hydraulic pipeline adopts a 24 ° cone and O-ring double seal to reduce leakage.
15. The coating of the roof protection frame adopts electrophoretic technology, robot welding, and the weld seam is firm, making the whole machine more stable and reliable.
16. Based on advanced ergonomics design, the integrated control valve style operating handle and centralized layout of electrical switches provide fast and convenient operation.

Kaytec

The products are constantly innovated and upgraded.
Parameters and appearance are subject to the actual product.



CONTACT US

- ✉ overseassales@crketai.com
- 🌐 www.kotaimachinery.com
- 📍 No. 496 Maoshan Road, Huangdao District, Qingdao, China